

DENSPLY
TULSA DENTAL
SPECIALTIES



Advanced Metallurgy for Greater Flexibility
That Sets a New Standard in Performance.

PROTAPER
Gold[™] ROTARY FILES

Efficient. Flexible. Brilliant.

ProTaper Gold.™ The Brilliance of ProTaper.® With Advanced Metallurgy.

THEN – ProTaper Universal sets a new standard in efficiency.



NOW – ProTaper Gold sets a new standard in performance.



- *Increased Flexibility*
- *Greater Resistance to Cyclic Fatigue*
- *Shorter 11 mm Handle*
- *Preferred Over ProTaper Universal*

ProTaper Gold features the same simplicity, smoothly tapered shapes and predictable performance you know and trust from ProTaper Universal. Now the ProTaper legacy continues with ProTaper Gold. Developed with proprietary advanced metallurgy, ProTaper Gold rotary files deliver greater flexibility for predictable ProTaper performance that's more brilliant than ever.

TRUSTED EFFICIENCY AND PREDICTABLE SHAPES.

The ProTaper Gold™ technology includes a series of “Shaping” and “Finishing” files that create the predictable ProTaper® shape, and a system proven by science and trusted by clinicians throughout the world.



“We all know that shaping significant canal curvatures can be scary. Gold has given me a new level of confidence and control that turns this fear into fun.”

— Dr. Jordan West



PROTAPER
Gold™ ROTARY FILES

Efficient. Flexible. Brilliant.

GREATER FLEXIBILITY. START-TO-FINISH.

ProTaper Gold's visibly advanced metallurgy creates a difference you can see – and feel. That's because ProTaper Gold™ rotary files feature the same exact geometries as ProTaper® Universal, but offer an increase in flexibility. This is especially important in the Finishing Files, when navigating challenging curves in the apical region.

ProTaper Gold Shaping Files pre-enlarge canals and are designed to be used with the same familiar outstroke brushing technique.

ProTaper Gold Finishing Files provide the trusted deep shapes that promote 3D cleaning and filling root canal systems.



Shaper X
0.19 / .04v

Shaper 1
0.18 / .02v

Shaper 2
0.20 / .04v

Finisher 1
0.20 / .07v

Finisher 2
0.25 / .08v

Finisher 3
0.30 / .09v

Finisher 4
0.40 / .06v

Finisher 5
0.50 / .05v



ProTaper 13 mm

ProTaper Gold 11 mm

ProTaper Gold's shorter handle allows improved accessibility to teeth.

Due to their metallurgy, ProTaper Gold files may appear slightly curved when removed from the package. This is not a defect, but rather, an advantage.

Greater Resistance to Cyclic Fatigue.

ProTaper Gold provides more than twice the resistance to cyclic fatigue as ProTaper Universal.* And that's an important advantage, because cyclic fatigue is the leading cause of file separation.¹

PROTAPER GOLD

PROTAPER UNIVERSAL

BRILLIANT PERFORMANCE.

The majority of clinicians prefer ProTaper Gold™ rotary files over ProTaper® Universal rotary files, making them the new gold standard in efficient performance.* ProTaper Gold creates the same smoothly tapered shapes as ProTaper Universal², while delivering significant new advantages. You get enhanced flexibility and resistance to cyclic fatigue, with the familiarity of a complete file system you know and trust. ProTaper Gold rotary files are designed for single-patient use.

ProTaper Gold's corresponding paper points, gutta-percha points and obturators are system matched to fit its predictable shapes.



ProTaper Gold uses the same rotary action and works with the same motors and settings as ProTaper Universal.

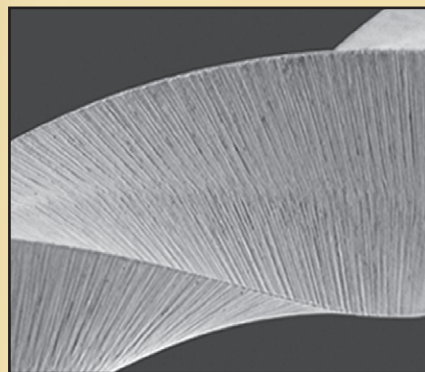


ProTaper Gold's proprietary processing allows it to follow canal curvature. As such, the file may retain the shape of the canal upon removal. This is normal. The file can be easily straightened or further curved.

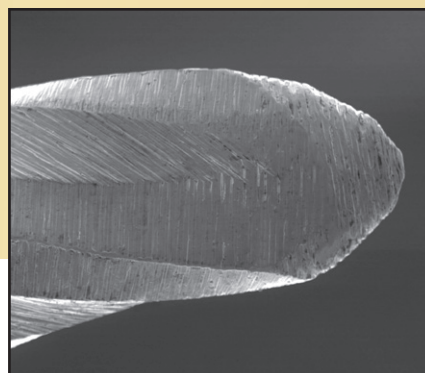


Developed for all dentists who desire predictable shapes, ProTaper Gold features a patented, progressively tapered design that significantly improves cutting efficiency and safety.³

ProTaper Gold's convex triangular cross-section and progressive taper enhance cutting action while decreasing rotational friction between the blade of the file and dentin.⁴



The non-cutting tip design allows each instrument to safely follow the secured portion of the canal while the small flat area on the tip enhances its ability to find its way through soft tissue and debris.⁵



All the ProTaper efficiency you trust, now with visibly advanced metallurgy for greater flexibility and resistance to cyclic fatigue. ProTaper Gold. The new standard in performance.

Call 1-800-662-1202 or visit www.TulsaDentalSpecialties.com

PROTAPER Gold™ ROTARY FILES

Efficient. Flexible. Brilliant.

DENSPLY
TULSA DENTAL
SPECIALTIES



1-800-662-1202

For the latest information consult
www.TulsaDentalSpecialties.com

Patent Pending
www.TulsaDentalSpecialties.com/patents

- 1 Shen Y, Cheung GS, Bian Z, Peng B. Comparison of defects in ProFile and ProTaper systems after clinical use. J Endod. 2006 Jan;32(1):61-5.
- 2 West J. Endodontic Update 2006. J Esthet Restor Dent. 2006; 18(5): 280-300. Review.
- 3 Berutti E, Chiandussi G, Gaviglio I, Ibba A. Comparative analysis of torsional and bending stresses in two mathematical models of nickel-titanium rotary instruments: ProTaper versus ProFile. J Endod. 2003 Jan;29(1):15-9.
- 4 Berutti E, Negro AR, Lendini M, Pasqualini D. Influence of manual preflaring and torque on the failure rate of ProTaper rotary instruments. J Endod. 2004 Apr;30(4):228-30.
- 5 Blum JY, Machtou P, Ruddle C, Micallef JP. Analysis of mechanical preparations in extracted teeth using ProTaper rotary instruments: value of the safety quotient. J Endod. 2003 Sep;29(9):567-75.

* Internal testing. Data on file.